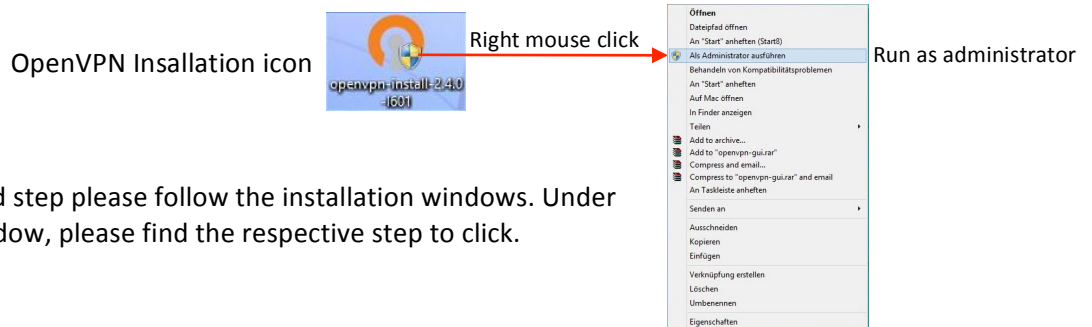
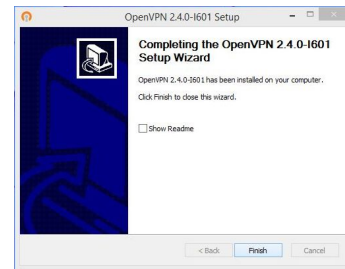
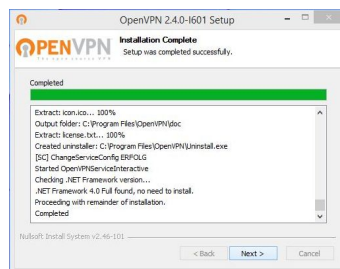
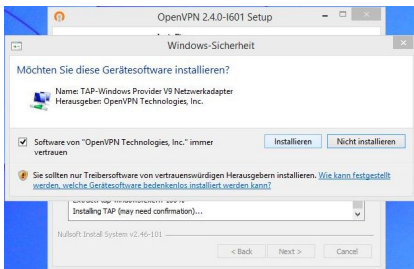


Installing remote viewing Open VPN

1. As first step, please double click the installation file and confirm that the software will be installed to your computer. (It is may necessary to start the installation with a right mouse click on the icon and click on “run as administrator”.)

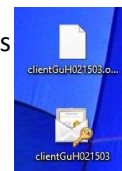


2. As second step please follow the installation windows. Under each window, please find the respective step to click.

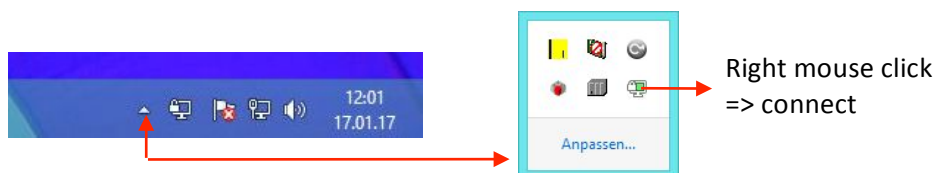


The open VPN software is now installed under the path: C:\ProgramFiles\OpenVPN

3. As next step, please paste 2 certification files, that Gamperl & Hatlapa provides under **C:\ProgramFiles\OpenVPN\config**
The files have to be copied and paste as administrator from the Desktop.
Otherwise an error will prevent the process.

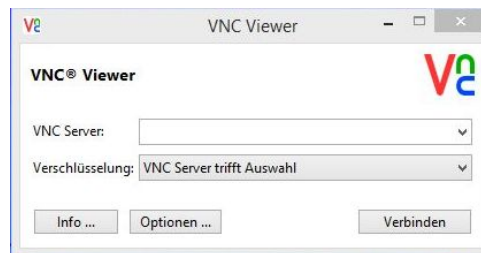


4. Please make a right click on the OpenVPN icon and run the program as administrator. The OpenVPN software will open automatically and an icon will appear in the task line. As last step please make a right click on the symbol an choose connect. The software will connect to the DaVis monitor, when the 4G communication module is running.



Installing RealVNC for remote viewing

1. You can download the RealVNC viewer for your computer at:
<https://www.realvnc.com/download/viewer>
 Please choose your operating system and download the .exe file.
2. Please double click the icon and the RealVNC window will open to enter the address.

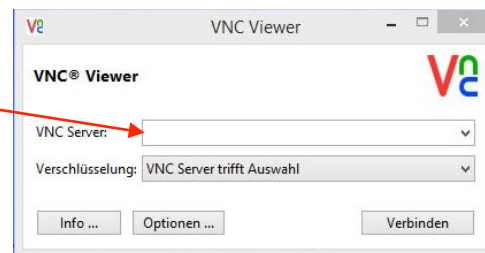
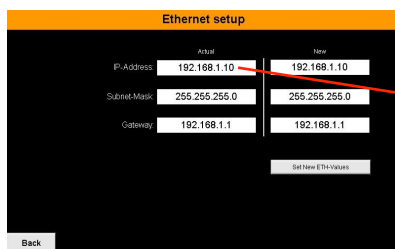


3. As last step, please click on connect and the VNC-Viewer will mirror the monitor on your computer.

How to connect to monitor via VNC-Viewer

1. If you are connected to the 4G communication module WiFi, please enter the IP-Address, which you will find in the Ethernet setup in the main menu of the monitor.

Working surface -> Main menu -> Enter password -> Ethernet setup



2. If you are connected via Internet, please enter the netmapping address that will be provided by Gamperl & Hatlapa and the ending of the IP-Address

