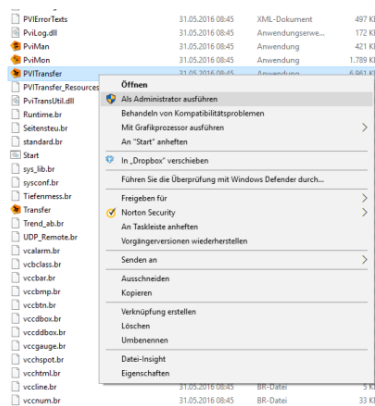


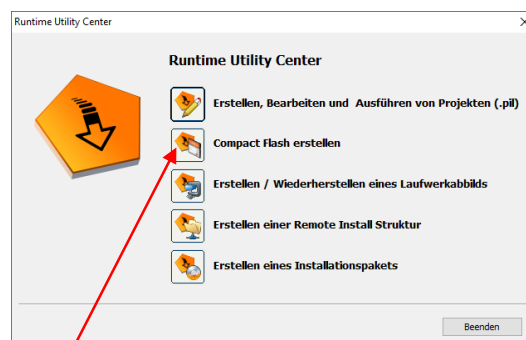
Creating a Compact Flash Card with Runtime Utility

1. Download the files with the link received from GuH
2. Extract the files into a folder (e.g. on the Desktop)
3. Open the extracted folder
4. Look for the file PVI Transfer, right click and select **“Run as administrator”**



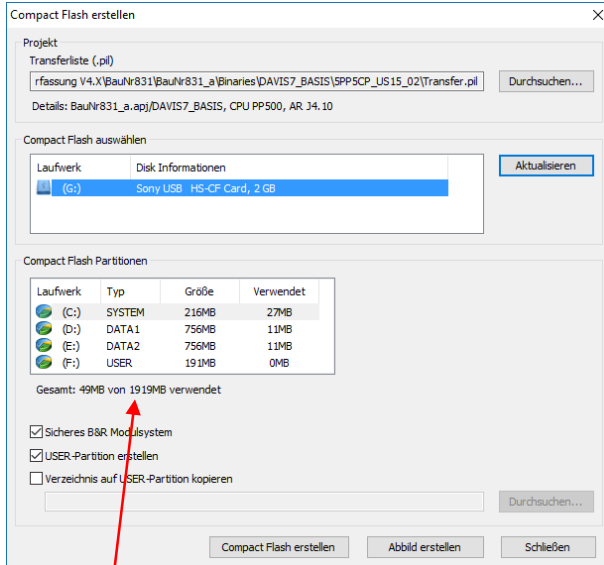
It may be necessary to select “Get your apps and devices working”, there for please look in the internet for the next stages for your Windows version.

The Runtime Utility Center starts with



5. Select **“Compact Flash erstellen”**

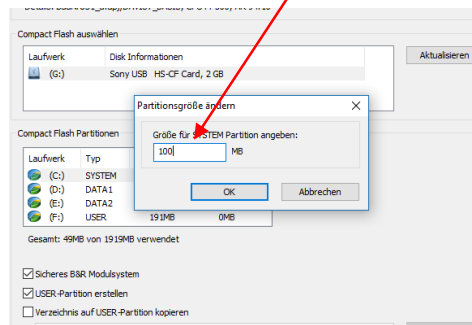
6. Settings



Folder where the *.pil files is in (extracted folder). Click on “Durchsuchen” = Search, if this folder does not match and select the right *.pil file

List of removable drives. Here you should automatically see the Card reader and the compact flash card

Select “User Partition” and double click the partition to enter the size



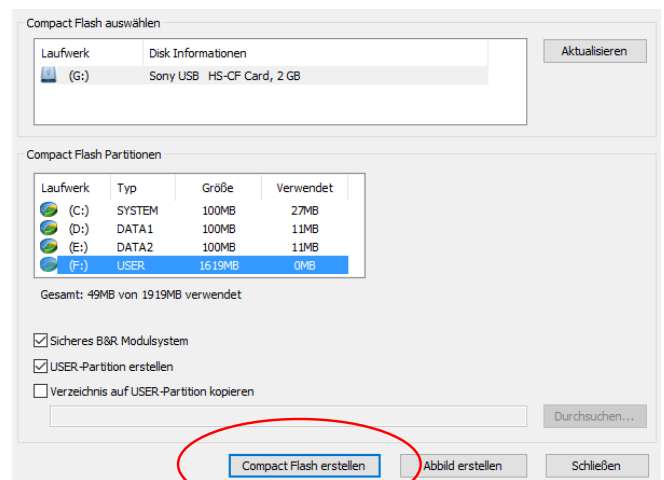
Recommended sizes for an 2GB card

System = 100MB

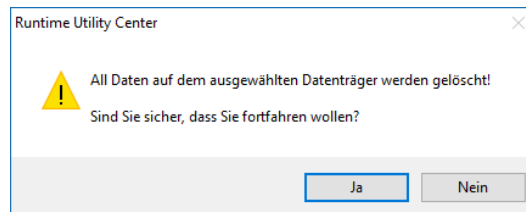
DATA1 = 100MB

DATA2 = 100MB

User = Card size – 300MB

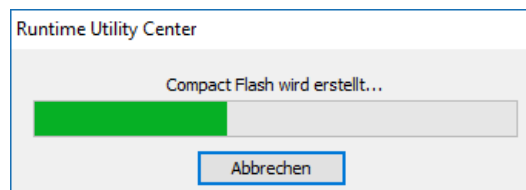


7. Select “Compact Flash erstellen” and the warning screen pops up

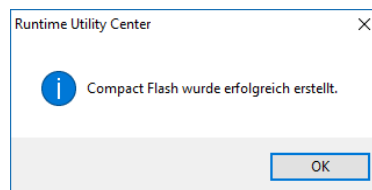


The card will be formatted and all data on the card will be lost.

Select “ja” to start the process...



When the process is finished without any error this screen pops up



Now the card can be unplugged and the card can be put into the monitor.